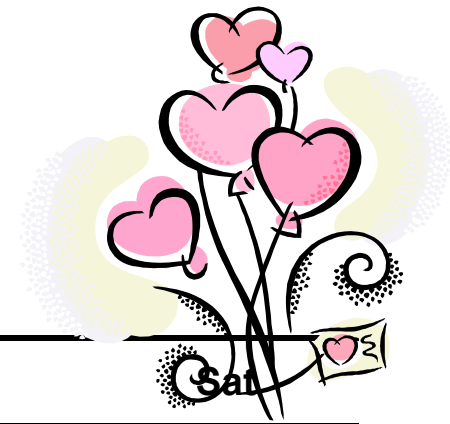





February 2010



OLPH LUNCH MENU

Sun	Mon	Tue	Wed	Thu	Fri	Sat
MILK: SKIM, 1%, STRAWBERRY, CHOCOLATE, & VANILLA. OJ AND AJ	1 Chicken Nuggets Mashed Potatoes & Gravy Green Beans Roll & Fruit Pear Crisp	2 Spaghetti with Meat Sauce Salad & Carrots Garlic Bread Fruit & Cookie	3 Hamburger or Cheeseburger/bun French Fries Corn on the cob Fruit/Banana Pudding	4 Chicken & Cheese Quesadillas/asst tops Broccoli & Cheese Beans Rice & Fruit PTO TREAT	5 The Max Pizza Salad Buttered Corn Fruit	6
<i>CATHOLIC SCHOOLS WEEK! THANKS FOR SUPPORTING OLPH SCHOOL!!!!!!!!!!!!</i>						
7 BOTTLED WATER YOGURTS & GOGURTS ARE .50 EXTRA	8 Baked Ham Mac & Cheese Peas Cornbread Muffin Fruit & Cookie	9 Turkey Hot Brown Mashed Potatoes & Gravy Sweet Carrots Fruit Roll	10 Parmesan Chicken with Pasta and Spaghetti Sauce Salad Roll & Fruit Cake	11 Grilled Cheese Chicken Pot Pie Soup Baby Carrots & Dip Crackers & Fruit	12 Twisted Edge Pizza Salad Buttered Corn Fruit	13
14 <i>HAPPY VALENTINE'S DAY!</i> 	15 NO SCHOOL	16 Chili w/asst tops Peanut Butter Cup & Celery Sticks Crackers Fruit	17 Cheesy Breadsticks & Sauce Salad Corn on cob Fruit & Juice Bar <i>Ash Wednesday</i>	18 Ham or Ham & Cheese Sandwich Salsa & Chips Pickle & Fruit Pear Crisp	19 Tony's Cheese Pizza Salad Buttered Corn Fruit <i>Lent</i>	20
21	22 BBQ Riblet On a bun French Fries Baked Beans Fruit	23 Fish on a bun Macaroni & Cheese Peas Fruit Apple Crisp	24 Chicken & Noodles Mashed Potatoes & Gravy Green Beans Roll Fruit & Ice Cream	25 Corn Dogs French Fries Sweet Carrots Fruit	26 Domino's Cheese Pizza Salad Buttered Corn Fruit <i>Lent</i>	21
28	EXTRA ENTRÉE' CHOICES: BREADED CHICKEN/BUN, H/S CHICKEN/BUN, HOT DOG/BUN, BAKED POTATO/ROLL, SALAD BAR/ROLL, PB, & PB/J. <i>DURING LENT, WE WILL NOT OFFER ANY MEAT. WE WILL SUBSTITUTE FISH ON A BUN & GRILLED CHEESE FOR EXTRA ENTRÉE'S.</i>					